

## PT TEC Indonesia Site Report Information

Address: Lot 108-110, Batamindo, Mukakuning, Batam, Indonesia

Lot area:15,360 m<sup>2</sup>, Building area: 10,890 m<sup>2</sup>, Green ratio: 29.1%

Establishment: 01, 07, 1992, Employees: 1501 (as of March 2011)

Major products: POS related product and Barcode

ISO 14001 certified: 10, 01, 1996, Latest update: 24 Sep 2010  
(ISO Certificate number: 01 104 106493)



## Message from Environmental Preservation Chief

PT. TEC Indonesia (TIE) commit to maintain the green environment. All the company activities will give priority to the friendly environment. We giving education to employee and students to make them realize the important of the green environment for our future life; every small activities for the green environment will give the better life for the next generation



Environmental Preservation Chief  
Meir Hotmaria Pardede

## Major environmental activities in 2010

### Reduction in CO2 emissions

Movement of AC Condenser to the open air  
Installed pull-string lighting switch at Production area  
Reduction of CO2 (energy) emissions by 1% per year.

### Reduction in Chemical emissions

Use Recycled IPA for maintenance activity

### Corporate Social Responsibility

Student attachment  
Cleaning the surrounding Company (Sep 2010)

## Development of products and environmental technologies, Environmental consideration point

RoHS compliance products



## Environmental communication

- ~ Environmental report (UPL/UKL) to government twice a year
- ~ The participation of top management to visit and check waste vendor facility and legality in order to ensure that TIE hazardous waste is properly handled according to government regulation

# Environmental, Health and Safety Policy

**PT. TEC Indonesia**, as a Manufacturer of Printer (including Media Handling and Print Mechanism), Point of Sale Terminal, Information Processing Equipment & Power Supply, shall integrate Environmental, Health and Safety considerations in our activities, products and service decision-making to prevent pollution, injury & ill-health and safety hazard, resources conservation, continual improvement and protect human's well being and the environment.

We shall

- Establish, maintain and continually improve our Environmental, Health & Safety Management System.
- Integrate the Environment, Health and Safety Management in all aspects of our operation.
- Comply with the Environment, Health and Safety legislation and regulation.
- Set Environmental, Health & Safety objectives and voluntary targets and to review regularly.
- Develop and provide environmentally conscious products and services which contribute to the reduction of environmental impacts
- Create a culture of Environmental, Health & safety Awareness among all employees through communication, education and promotional activities; make available to interested parties.
- Prevent pollution through efficient use of natural resources, proper management of waste materials and reducing/eliminating use of hazardous substances.
- Improve and maintain a healthy and safe work environment through proper safe work procedures, managing hazards and implementing risk controls.
- Disclose and communicate with stakeholders and society in order to facilitate mutual understanding concerning environmental activities.

**Tetsu Oda**

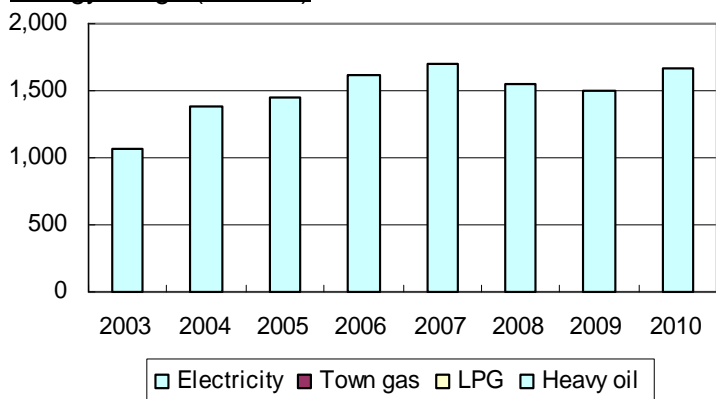
Managing Director  
PT TEC Indonesia  
Revised on 20 May 2011

**Meir Hotmaria Pardede**

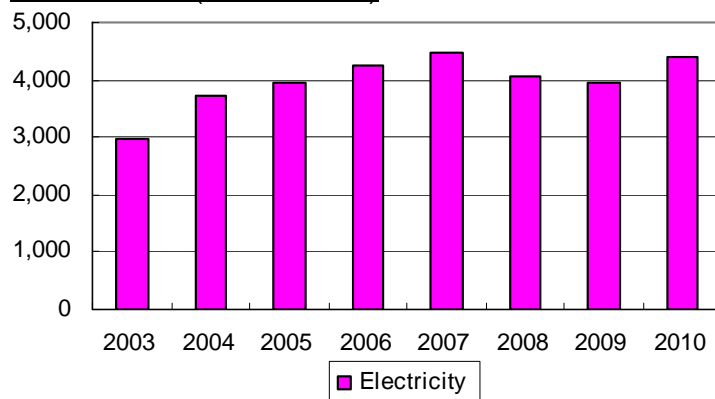
Environmental, Health & Safety  
Management Representative

**Environmental load data**

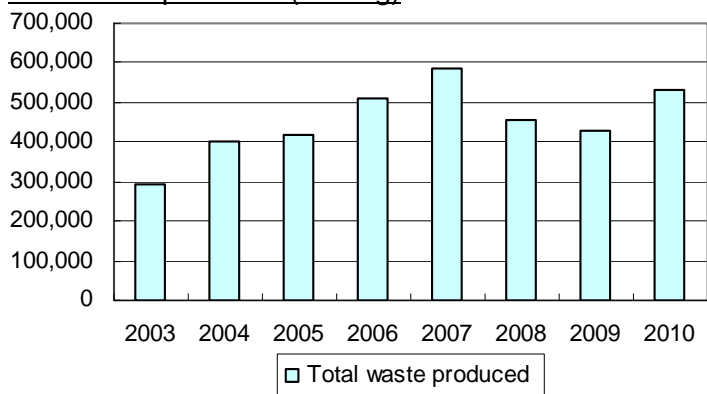
**Energy usage (unit: KL)**



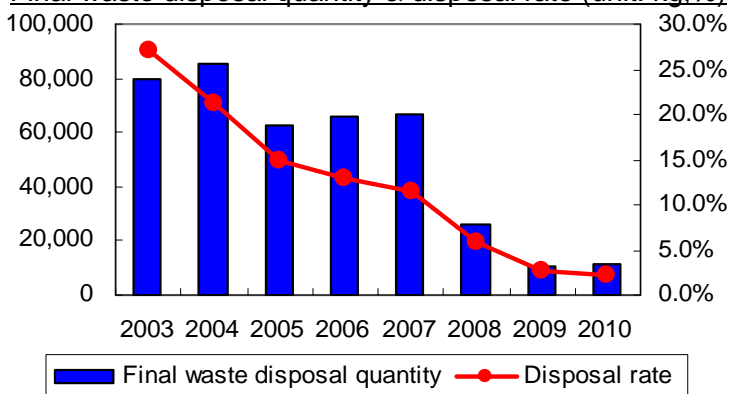
**CO<sub>2</sub> emission (unit: ton-CO<sub>2</sub>)**



**Total waste produced (unit: kg)**

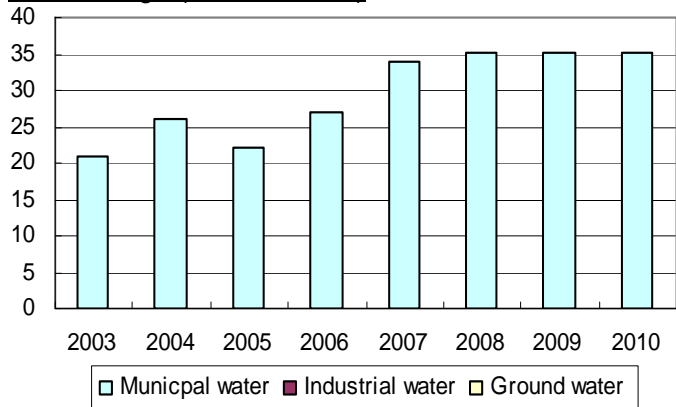


**Final waste disposal quantity & disposal rate (unit: kg, %)**

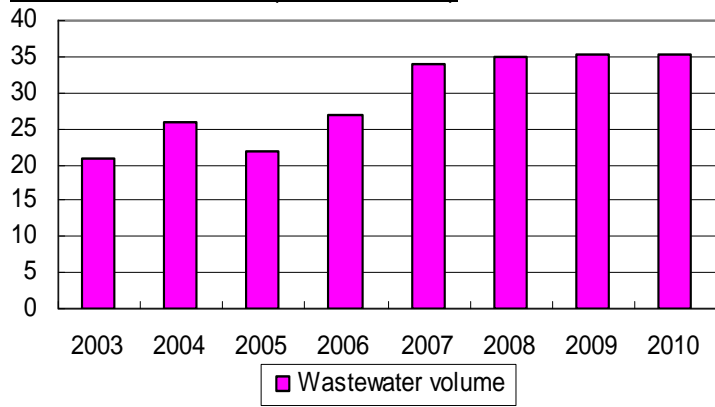


Major wastes: Sludge, Metal, Plastic, Paper/Carton, oil, etc.

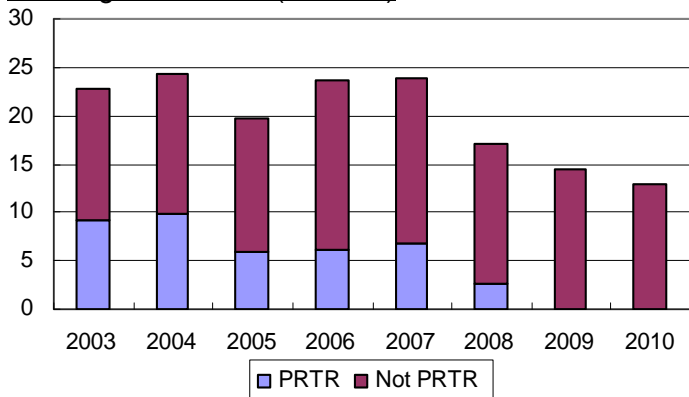
**Water usage (unit: 1,000m<sup>3</sup>)**



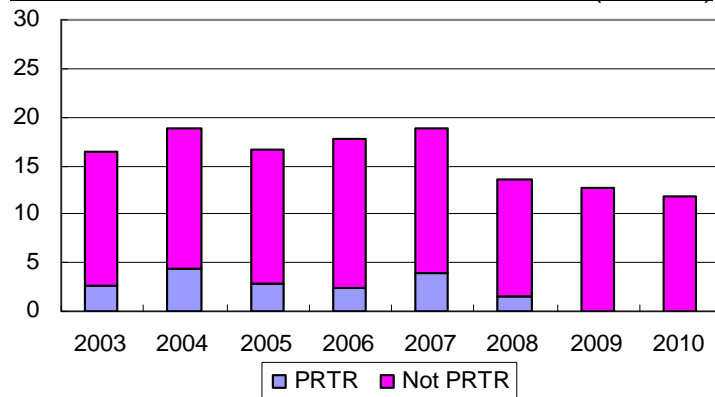
**Wastewater volume (unit: 1,000m<sup>3</sup>)**



**Handing substances (unit: ton)**



**Substances volatilized and released to water (unit: ton)**



Major chemical substances: Isopropyl Alcohol

## Compliance management

### Atmospheric measurement results

(Exhaust fan (SMT line, Brazing, Dot Head, PCB each 1 unit). From outside Building Exhaust fan 4 units)

	Regulation value	Self-control value	Actual measurement	Measurement frequency
NOx ( $\mu\text{g}/\text{Nm}^3$ )	Max. 400	Max. 360	57.06	twice/year
SOx ( $\mu\text{g}/\text{Nm}^3$ )	Max. 900	Max. 810	19.49	twice/year
Dust ( $\mu\text{g}/\text{Nm}^3$ )	230	207	26.49	twice/year

### Wastewater measurement results (major results) (Building No. Lot 108, 109 & 110 total 3 facilities)

(Lot 108 and 109 from domestic drainage and Lot 110 from WWTP). Wastewater is discharged to Batamindo open drain

	Regulation value	Self-control value	Actual measurement	Measurement frequency
Hydrogen ion concentration (pH)	6.0 – 9.0	6.0 – 9.0	6.74	Twice/year
BOD (mg/l)	Max.150	Max 135	19.53	Twice/year
COD (mg/l)	Max. 300	Max. 270	46.51	Twice/year
SS (mg/l)	Max. 400	Max. 360	56	Twice/year
Nitrogen (mg/l)	NA	NA	NA	NA
Fluorine (mg/l)	Max. 3	Max. 2.7	0.23	Twice/year

### Noise & vibration measurement results (Noise: AC Exhaust fan (4 units) and Chemical Exhaust fan 4 units)

	Location: Time	Regulation value	Self-control value	Actual measurement	Measurement frequency
Noise (dB)	Lot boundary: Day	Max. 70	Max. 70	62.5	Twice/year
	Lot boundary: Night	NA	NA	NA	NA
Vibration (dB)	Lot boundary: Day	NA	NA	NA	NA
	Lot boundary: Night	NA	NA	NA	NA

### Other measurement results (Sewage Water Law: Major results)

	Regulation value	Self-control value	Actual measurement	Measurement frequency
Hydrogen ion concentration (pH)	NA	NA	NA	NA
BOD (mg/l)	NA	NA	NA	NA
SS (mg/l)	NA	NA	NA	NA

### Environmental accidents, administrative advices and complaints

	State
Environmental accident	None
Environmental problem around the factory and in the local area	None
Administrative advice or direction	None
Complaint from neighboring residents	None

<Environmental targets>

Item	Indicator	Target for FY2011
Global warming prevention	In the ratio of CO2 emissions to net output relative to FY2004	1% reduction
Optimization of resources	In the ratio of total amount of waste generated to output relative to FY2004	1% reduction
Control of Chemical Substances	Reduction in the quantity of the toxic chemical FY2004	1% reduction

<Environmental objectives >

Item	Indicator	Target for FY2012
Global warming prevention	In the ratio of CO2 emissions to net output relative to FY2004	1% reduction
Optimization of resources	In the ratio of total amount of waste generated to output relative to FY2004	1% reduction
Control of Chemical Substances	Reduction in the quantity of the toxic chemical FY2004	1% reduction