

TOSHIBA TEC Singapore Pte. Ltd. Site Report Information

Address: 2 Ang Mo Kio Street 62 Singapore 56913

Lot area: 170,000 m², Building area: 140,800 m², Green ratio: 5.0%

Establishment: Dec, 1988, Employees: 594 (as of March 2011)

Major products: Printers and POS related products

ISO 14001 certified: 29, August, 2002, Latest update: 11, November, 2010
(ISO Certificate number: 01 104 106495)



Message from Environmental Preservation Chief

Toshiba's TEC Singapore (TSE) business activities are design, development and manufacture of printer (including media handling and print mechanism), point of sale terminal and power supply. Manufacturing of information processing equipment. All employees at the factory promote environmental preservation activities in unison



Environmental Preservation Chief
Jasmine Goh

Major environmental activities in 2010

▪ Reduction in CO2 emissions

Switch off air-con during lunch time and after 7pm.

Replace energy saving T5 lighting

Installed pull-string lighting switch

Reduction of CO2 (energy) emissions by 1% per year.

▪ Continuation of zero waste emissions

Implemented Toner & Printer Cartridge Take Back Program

Eliminate use of wooden pallets by replacing them with improvised trolley

Reduction of total waste emissions by 1% per year.

▪ Corporate Social Responsibility

School Visit: Environmental education awareness to Polytechnic students

Participated in the Singapore National Environmental Agency (NEA) Recycling Day – Sept 4, 2010

Tree Planting at the Sungei Buloh Wetlands Reserve

Development of products and environmental technologies, Environmental consideration point

Energy Efficient Product design

- Implemented power saving feature into 2 of the printer product that achieved Off mode power consumption to be less than 0.5W. This level of design meet to the future EuP directive of Year 2013

ECO Packaging design

- Implemented recycle paper material for carton box instead of polyfoam material on 2 printer products.
- To implement on all products.

Environmental communication

- EHS Programmes for vendors/contractors
- Toshiba TEC Singapore environment policy and requirements are shared with our suppliers during Supplier's Meeting
- Activities on notice board shared to guests, suppliers and employees
- Sharing of activities on company website

ENVIRONMENTAL, HEALTH & SAFETY POLICY

TOSHIBA TEC SINGAPORE main businesses are contract manufacturing; design, development and manufacturing of IT (Information Technology) related products. We shall integrate Environmental, Health & Safety considerations in our business decision making to prevent pollution, injury & ill-health, safety hazard, continual improvement and protect human's well being and the environment.

We shall

- Establish, maintain and continually improve our Environmental, Health & Safety Management System.
- Integrate the Environment, Health & Safety Management in all aspects of our operation.
- Comply with the Environmental, Health & Safety legislation and regulation.
- Set Environmental, Health and Safety objectives and voluntary targets and to review regularly.
- Develop and provide environmentally conscious products and services which contribute to the reduction of environmental impacts
- Create a culture of Environmental, Health & Safety Awareness among all employees through communication, education and promotional activities; make available to interested parties.
- Prevent pollution through efficient use of natural resources, proper management of waste materials and reducing/eliminating use of hazardous substances.
- Improve and maintain a healthy and safe work environment through proper safe work procedures, managing hazards and implementing risk controls.
- Disclose and communicate with stakeholders and society in order to facilitate mutual understanding concerning environmental activities

Takeshi Hiyoshi

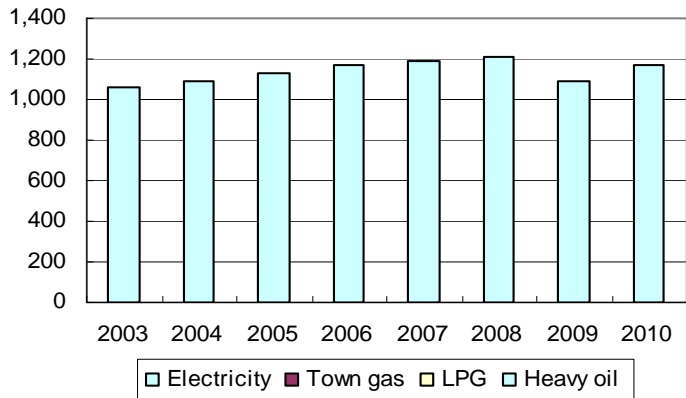
President and Chief Executive Officer
TOSHIBA TEC Singapore Pte Ltd
Revised on 1 April 2011

Jasmine Goh

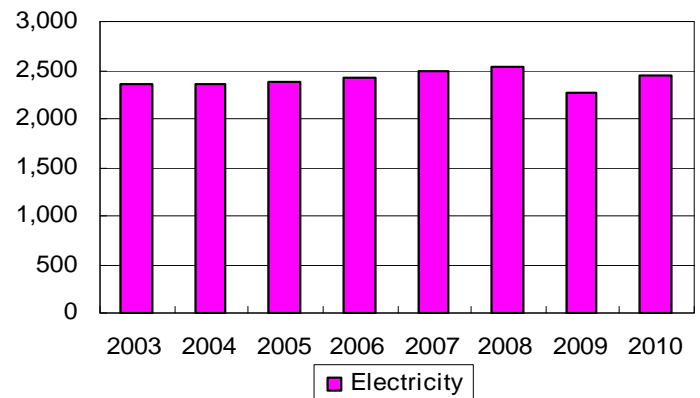
Environmental, Health & Safety
Management Representative

Environmental load data

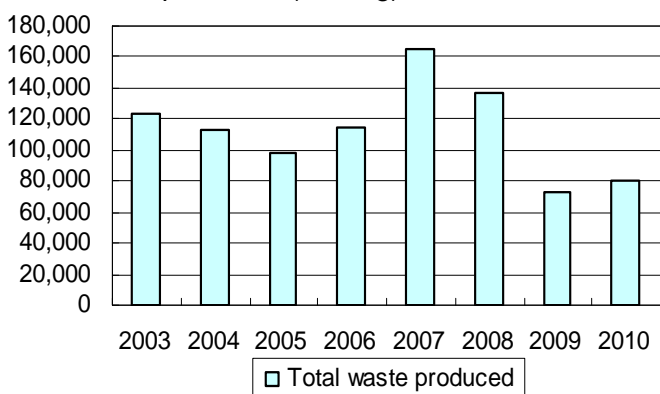
Energy usage (unit: KL)



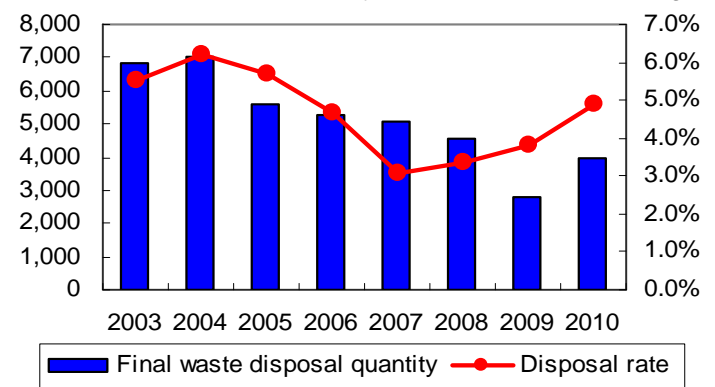
CO₂ emission (unit: ton-CO₂)



Total waste produced (unit: kg)

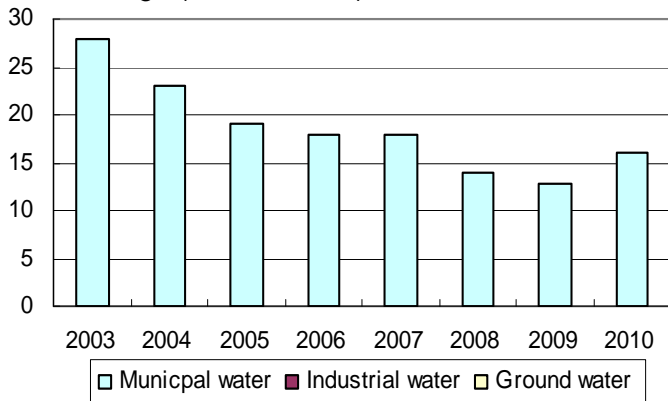


Final waste disposal quantity & disposal rate (unit: kg,%)

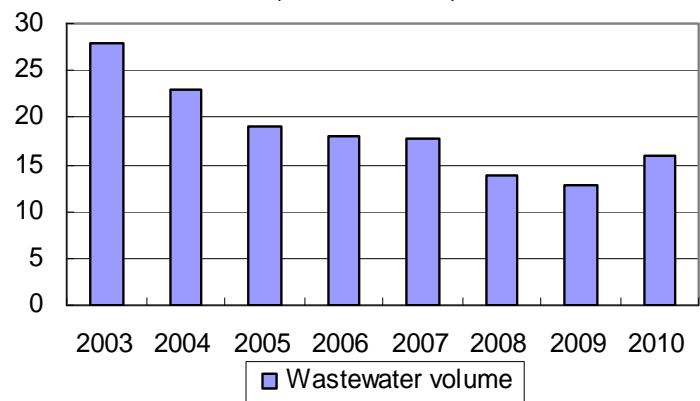


Major wastes: Acid, sludge, metal, glass, plastic, oil, etc.

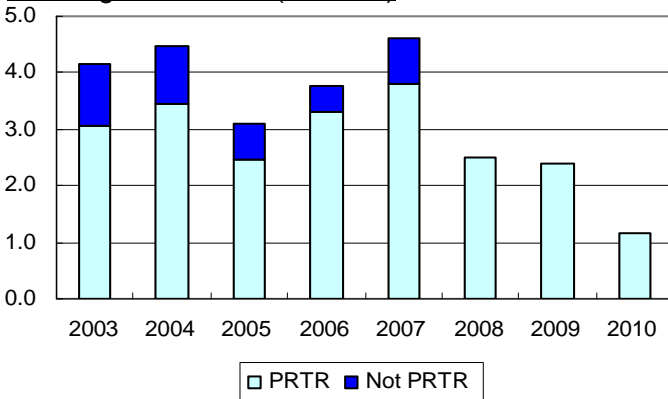
Water usage (unit: 1,000m³)



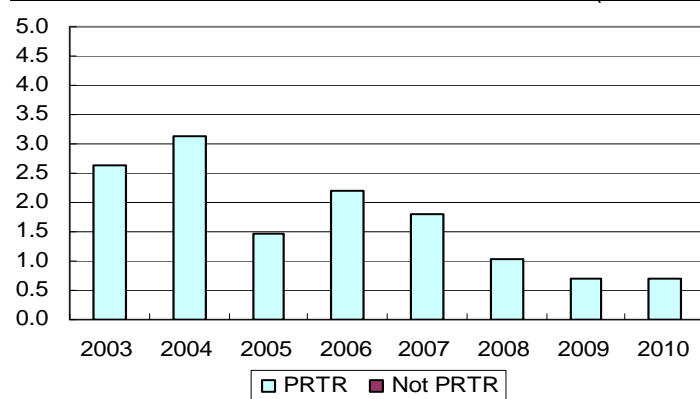
Wastewater volume (unit: 1,000m³)



Handing substances (unit: ton)



Substances volatilized and released to water (unit: ton)



Major chemical substances: Isopropyl Alcohol

Compliance management

Atmospheric measurement results

	Regulation value	Self-control value	Actual measurement	Measurement frequency
NOx (ppm)	Not Applicable	Not Applicable	Not Applicable	Not Applicable
SOx (Nm3/h)	Not Applicable	Not Applicable	Not Applicable	Not Applicable
Soot & dust (mg/Nm3)	Not Applicable	Not Applicable	Not Applicable	Not Applicable

Wastewater measurement results (major results) (Facility, IC at Guard House and IC near Bin Centre):

Wastewater is discharged to drainage

	Regulation value	Self-control value	Actual measurement	Measurement frequency
Hydrogen ion concentration (pH)	6-9	6.5-8.5	6.7	Once/2 years
BOD (mg/l)	400	350	8.5	Once/2 years
COD (mg/l)	600	500	59.4	Once/2 years
SS (mg/l)	Not Applicable	Not Applicable	Not Applicable	Not Applicable
Nitrogen (mg/l)	Not Applicable	Not Applicable	Not Applicable	Not Applicable
Fluorine (mg/l)	Not Applicable	Not Applicable	Not Applicable	Not Applicable

Noise & vibration measurement results (specific facilities AC Exhaust Fan (4units) , Chemical Exhaust Fan (3units))

	Location: Time	Regulation value	Self-control value	Actual measurement	Measurement frequency
Noise (dB)	Lot boundary: Day	75	72	64.3	Once/3 years
	Lot boundary: Night	65	62	63.4	Once/3 years
Vibration (dB)	Lot boundary: Day	Not Applicable	Not Applicable	Not Applicable	Not Applicable
	Lot boundary: Night	Not Applicable	Not Applicable	Not Applicable	Not Applicable

Other measurement results (Sewage Water Law: Major results)

	Regulation value	Self-control value	Actual measurement	Measurement frequency
Hydrogen ion concentration (pH)	6-9	6.5-8.5	6.7	Once/2 years
BOD (mg/l)	400	350	8.5	Once/2 years
SS (mg/l)	Not Applicable	Not Applicable	Not Applicable	Not Applicable

Environmental accidents, administrative advices and complaints

	State
Environmental accident	None
Environmental problem around the factory and in the local area	None
Administrative advice or direction	None
Complaint from neighboring residents	None

Environmental targets

The main Environmental targets for FY2011.

Item	Indicator	Target for FY2011
Global warming prevention	Energy consumption	1%
Optimization of resources	Water consumption Waste disposal	1%
Control of Chemical Substances	NIL	NIL

Environmental objectives

The main Environmental objectives for FY2012.

Item	Indicator	Objective for FY2012
Global warming prevention	Energy consumption	1%
Optimization of resources	Water consumption Waste disposal	1%
Control of Chemical Substances	NIL	NIL